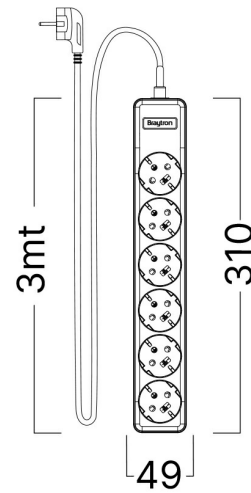
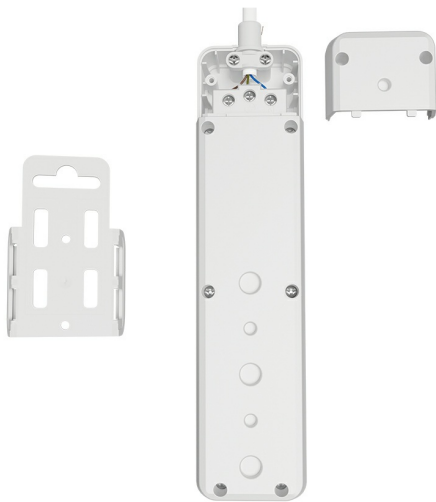


# Braytron

## PRODUCT DATASHEET

|             |   |
|-------------|---|
| MODEL NO    | BY72-00063  |
| DESCRIPTION | BRY-XLINE-6WAY-EU-3x1,5mm <sup>2</sup> -3M-EXT.SOCKET |



BRAYTRON SRL

Bulavardul Iuliu Maniu, Nr.616, Sector 6, 061129, Bucuresti-ROMANIA

info@braytron.com

www.braytron.com

Page 1-2

### General Characteristics

|             |   |                |
|-------------|---|----------------|
| Model No    | : | BY72-00063     |
| Main Family | : | Electrical     |
| Sub Family  | : | Extension Cord |
| Type        | : | Socket         |
| Body Color  | : | White          |
| Warranty    | : | 3 Years        |
| Class       | : | CLASS I        |
| IP          | : | IP20           |

### Electrical Characteristics

|                     |   |                  |
|---------------------|---|------------------|
| Voltage             | : | 220-240V 50/60Hz |
| Material            | : | PP+Copper        |
| Working Temperature | : | -20°C ~ +40°C    |
| Type of Cable       | : | H05VV-F3G1,50    |

### Package Informations

|         |   |               |
|---------|---|---------------|
| N.W.    | : | 8,9 kgs       |
| G.W.    | : | 9,3 kgs       |
| PCS/CTN | : | 15            |
| Length  | : | 37,5 cm       |
| Width   | : | 31 cm         |
| Height  | : | 23,5 cm       |
| EAN     | : | 5949097738197 |

### Product Characteristics

|         |   |            |
|---------|---|------------|
| Wattage | : | Max.3600 w |
|---------|---|------------|

### Dimensions & Weight

|           |   |        |
|-----------|---|--------|
| P. Length | : | 310 mm |
| P. Width  | : | 49 mm  |
| P. Height | : | 40 mm  |
| Weight    | : | 593 gr |