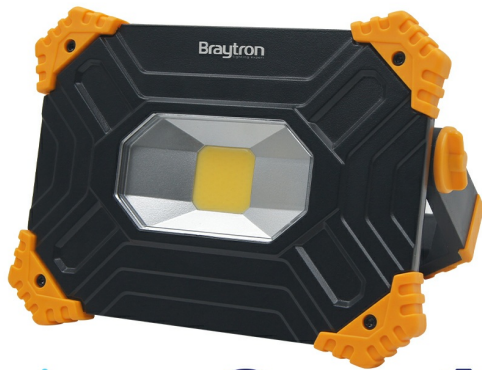


Braytron

PRODUCT DATASHEET

MODEL NO BT59-00231

DESCRIPTION BRY-WLB20-BLC-20W-6500K-BATTERY WORK LIGHT



Braytron



WLB20 BATTERY
LED WORK LIGHT

Model No:
BT59-00231

Max 20w - 2000lm

Cool Daylight 6500K

Li-Ion, Battery 18650
3.7V, 6600 mAh

2 hrs (%100)
4 hrs (%50)
8 hrs (%25)

Step Dimmable

Beam angle: 120°

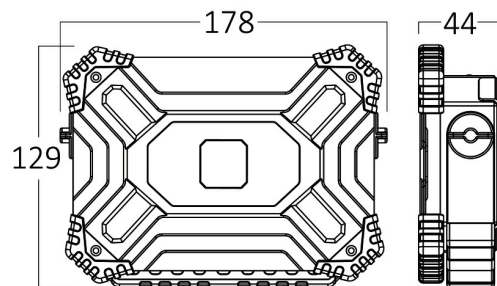
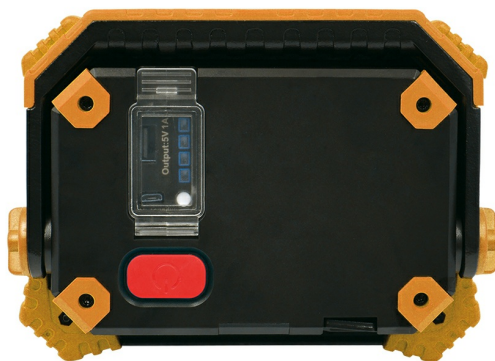


LED

IP65



WLB20 BATTERY
LED WORK LIGHT



Luminare is intended to use in outdoor applications

BRAYTRON SRL

Bulaverdul iuliu maniu, Nr.616, Sector 6, 061129, Bucuresti-ROMANIA

info@braytron.com

www.braytron.com

Page 1-2

General Characteristics

Model No	:	BT59-00231
Main Family	:	Outdoor Lighting
Sub Family	:	LED Worklight
Type	:	Worklight
Body Color	:	Black
Lamp Shape	:	N/A
Dimmable	:	Step Dim
Light Source	:	LED
Warranty	:	2 years(1 year for battery)
Class	:	Class III
IP	:	IP54

Electrical Characteristics

Lifetime	:	20000 h
Voltage	:	5V DC 2A
Material	:	Aluminium
Working Temperature	:	-20 C+40 C
Working Time	:	2 hrs(%100), 4 hrs(%50), 8 hrs(%25)
Frequency	:	50-60 Hz

Dimensions & Weight

P. Length	:	178 mm
P. Width	:	129 mm
P. Height	:	44 mm
Weight	:	620 gr

Product Characteristics

Wattage	:	Max 20 w
Color Temperature	:	6500K
Quse Lumen	:	2000 lm
Color Rendering Index (CRI)	:	>80
Beam Angle	:	120° Degrees
Color Category	:	Cool White

Battery Informations

Battery	:	Li-Ion,Battery 18650 3.7V,6600mAh
Charging Type	:	USB-C
Charging Time	:	5 h-6 h(5V 2A)

Package Informations

N.W.	:	9,30 kgs
G.W.	:	10,35 kgs
PCS/CTN	:	15 pcs
Length	:	420 mm
Width	:	290 mm
Height	:	200 mm
EAN	:	5949097731730